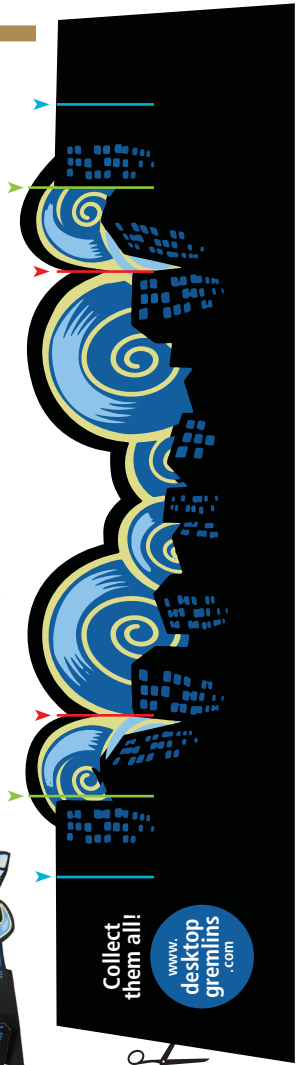


**Background:** Cut out right on art-edge of the piece.



**OFFICIAL!**

**Assemble!**  
Trim out the pieces as indicated. Don't forget to cut the color-coded assembly slots in each piece. Bend the **base** piece into a crescent-type shape and secure by sliding the **background**, **foreground**, and **credits** pieces into the **base** by aligning the corresponding color-coded slots.



Base: Cut out right on art-edge of the piece.

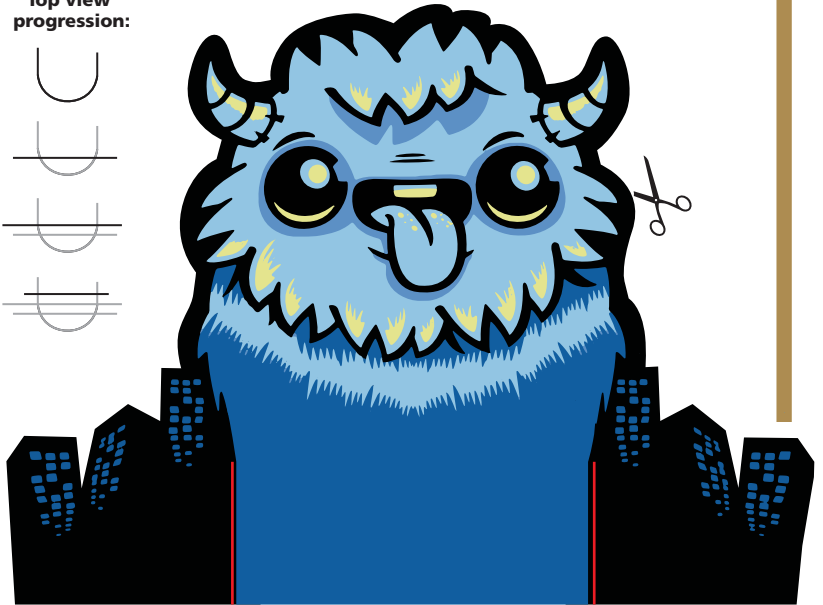
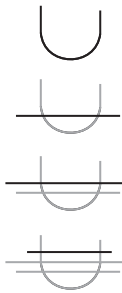


*No tape? No glue?  
No knives? No kidding!*



**Credits:** Cut out right on art-edge of the piece. Insert this rear-facing into the base piece.

**Top view progression:**



**Foreground:** Cut out right on art-edge of the piece.

